

In – Depth Training

In response to feedback from ERAPPA members, the region's Education Committee has been working to develop training sessions which explore one particular topic in depth. Our goal is to develop a curriculum of education sessions that offer professionals new management tools to help them do their jobs better.

These programs can be customized to meet the needs of your organization! Details about specific In-Depth programs and instructor contact information are available on our website at www.erappa.org.

Stewardship of Building Envelopes

Session Cost: \$250.00 per person

(includes refreshments, lunch and take away reference materials)

Class Size: 8-15

ERAPPA Partners in Education (PIE) Chapter training funds are available to support the organization on all In-Depth training programs.

To schedule training, register, or obtain course information contact:
Michael H. Brewer, Muhlenberg College at (484) 664-3400
brewer@muhlenberg.edu



The Eastern Region Association of Higher Education Facilities Officers

Is proud to offer an in-depth, participatory course on the

Stewardship Of Building Envelopes

Developed and Presented By:



MUHLENBERG COLLEGE

Levine & Company, Inc.

Stewardship Of Building Envelopes

This session is intended to educate facilities professionals in the art and science of designing and caring for the envelopes of their buildings. Instruction will address roofs, exterior walls, windows, doors, chimneys, and all above grade exterior surfaces of existing buildings, as well as methods of dealing with stormwater runoff, snow, and ice. Issues to consider for new construction will also be discussed. The primary focus will be on process rather than technique, although expert instructors are fully knowledgeable of building envelope systems to any level of detail.

Course Objectives

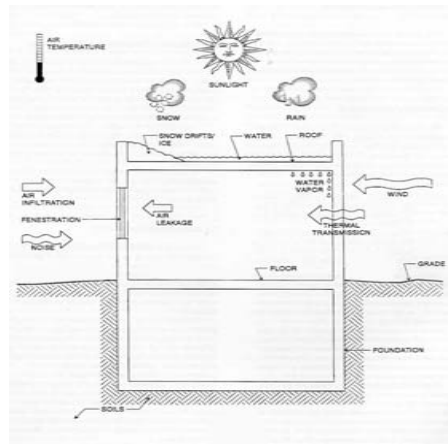
- Gain a greater understanding of the strategic role that envelopes play in the life of a building and the barrier they create between the outdoor environment and the indoor environment
- Learn how to incorporate life-cycle cost analyses of alternative approaches into building envelope decision-making processes
- Review generally accepted standards for building envelope construction, repair, and maintenance
- Make a compelling case for building envelope investments



Benefits

Attendees will be better able to:

- Appreciate long-term impact of effectively designing, constructing, and maintaining building envelope systems
- Understand the interaction of building envelope systems and their component parts
- Address weather-related impacts on building envelopes
- Determine priorities based upon potential risks
- Develop immediate, short-term strategies that won't cause greater, long-term problems
- Produce sound design documents for building envelope systems
- Make cost-effective decisions related to building envelope investments
- Engage in credible discussions with senior administrators and trustees with regard to building envelope life-cycle investment strategies
- Address an existing building envelope problem or condition on their campus (Each attendee will be asked to bring an example of a building envelope issue on their campus to share during a small group case study discussion)



Course Outline

Daily Schedule

9:00 – 10:30	Welcome, introductions, objectives, and share expectations Define Terms
10:30 – 10:45	Break
10:45 – 12:30	Philosophy Process Needs Assessment (Part 1)
12:30 – 2:00	Lunch Share Case Studies (small groups)
2:00 – 3:30	Needs Assessment (Part 2) Life-Cycle Analysis
3:30 – 3:45	Break
3:45 – 5:00	It's all in the details - flashings Sources of Information/Resources Consultant/Contractor Selection Feedback

Guest Presenters:

Michael H. Brewer, Director of Plant Operations
Muhlenberg College
Jeffrey L. Erdley, President
Masonry Preservation Services, Inc., Berwick, PA
Christopher Gluesing, Director of Projects and Planning
Bryn Mawr College
Eric Godfrey, Principal
CVM Facilities Renewal, Wayne, PA
Jeffrey S. Levine, Principal
Levine & Company, Inc., Ardmore, PA
David A. VanOcker, Principal
CVM Facilities Renewal, Wayne, PA